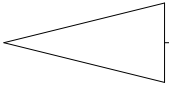
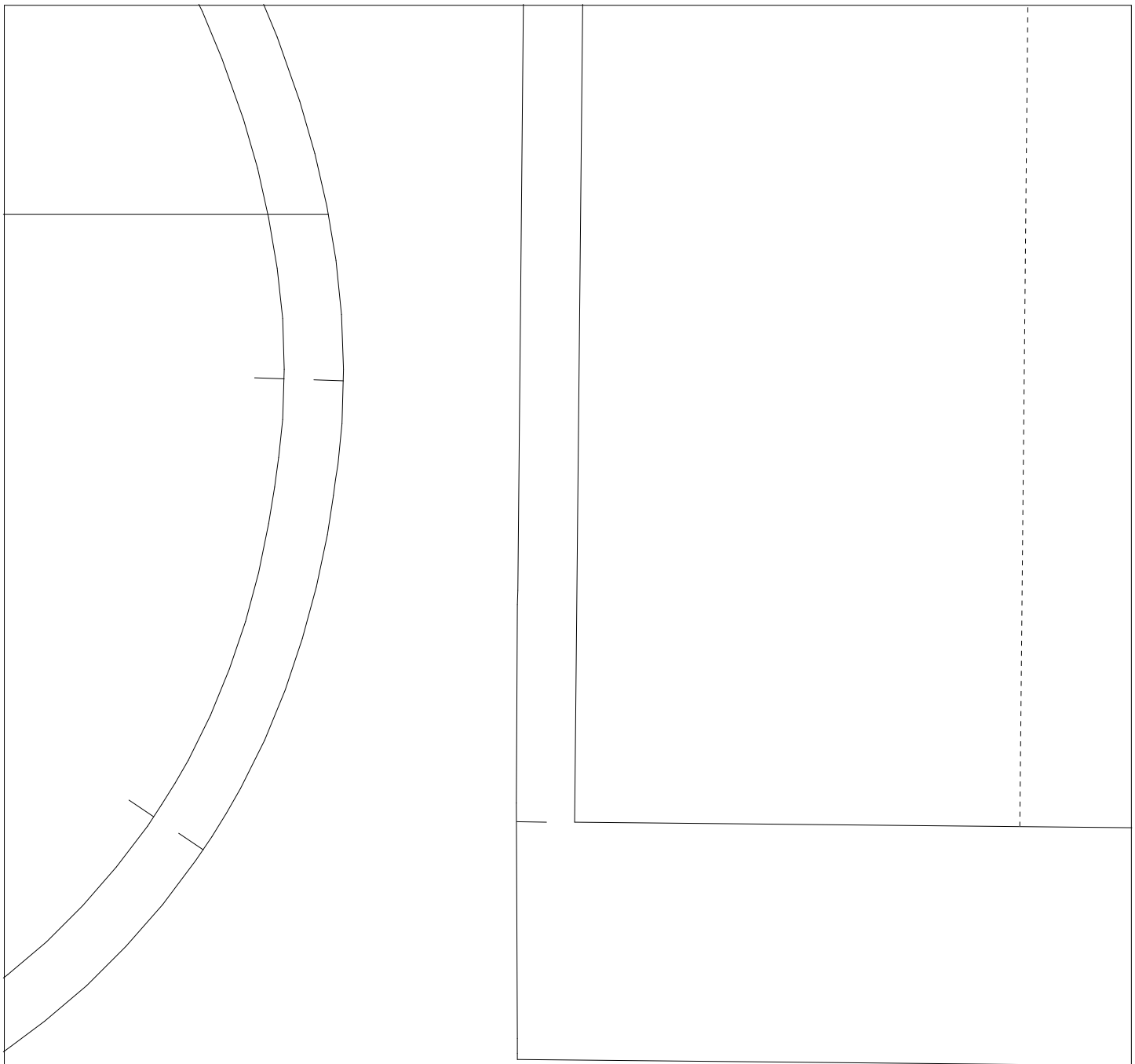


warp thread

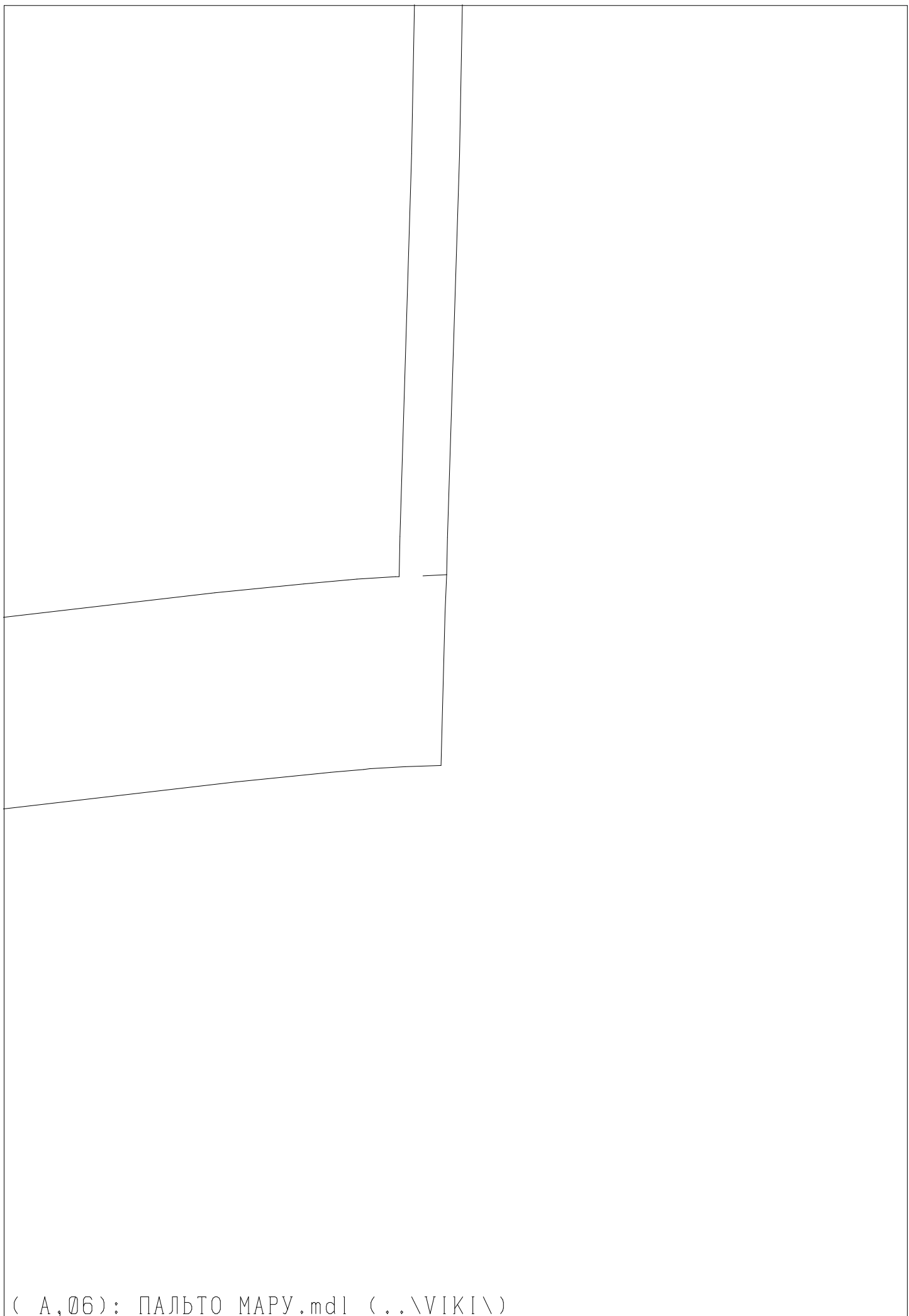


coat mary
size 36
height 2 (162-168)
sleeve
2 details

- VIKISEWS.COM
- VIKISEWS_PATTERNS
- YOUTUBE - VIKI SEWS
- VK.COM - VIKISEWS



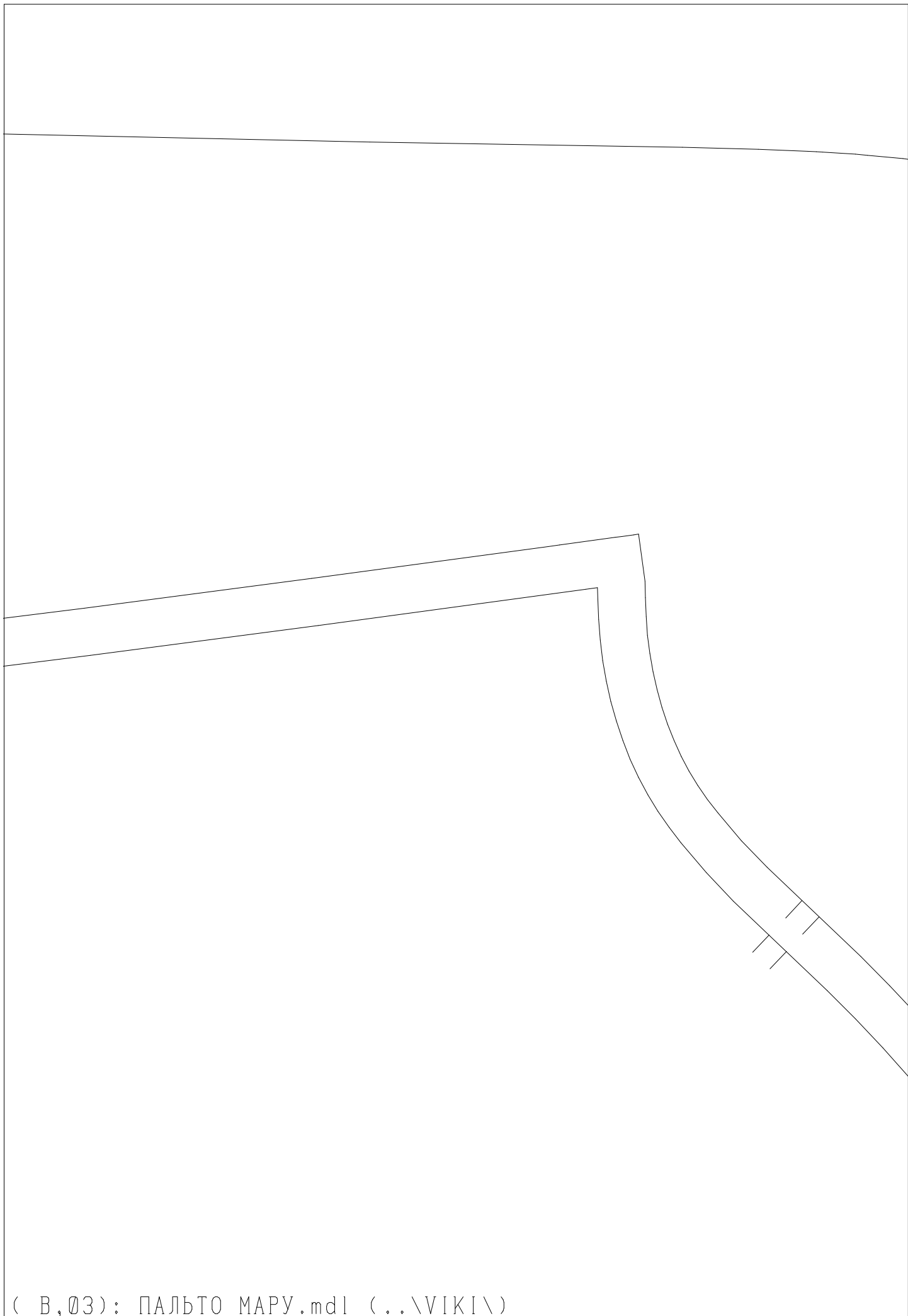
pocket area

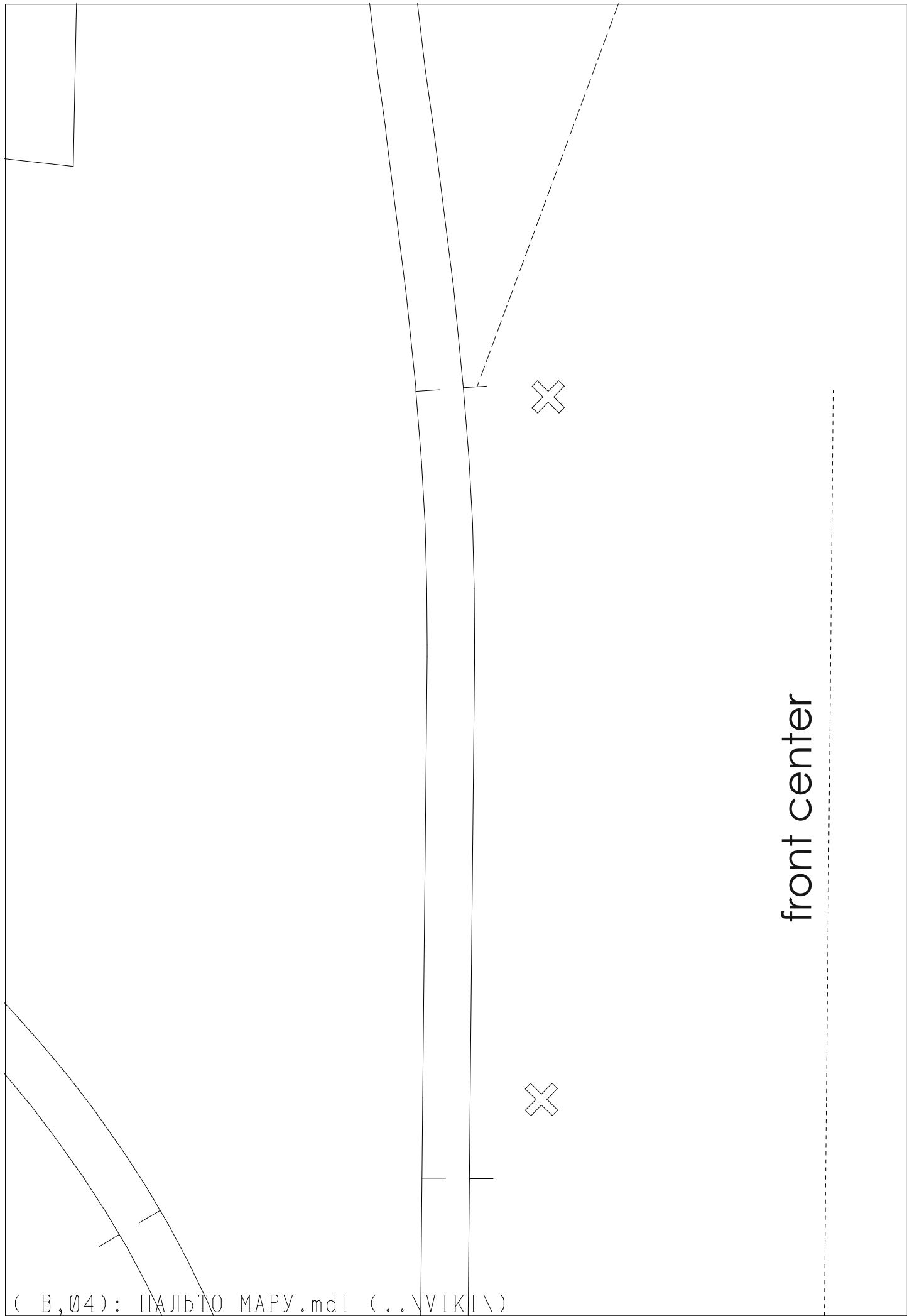


(A,06): ПАЛЬТО МАРУ.mdl (..\VIKI\)

clue



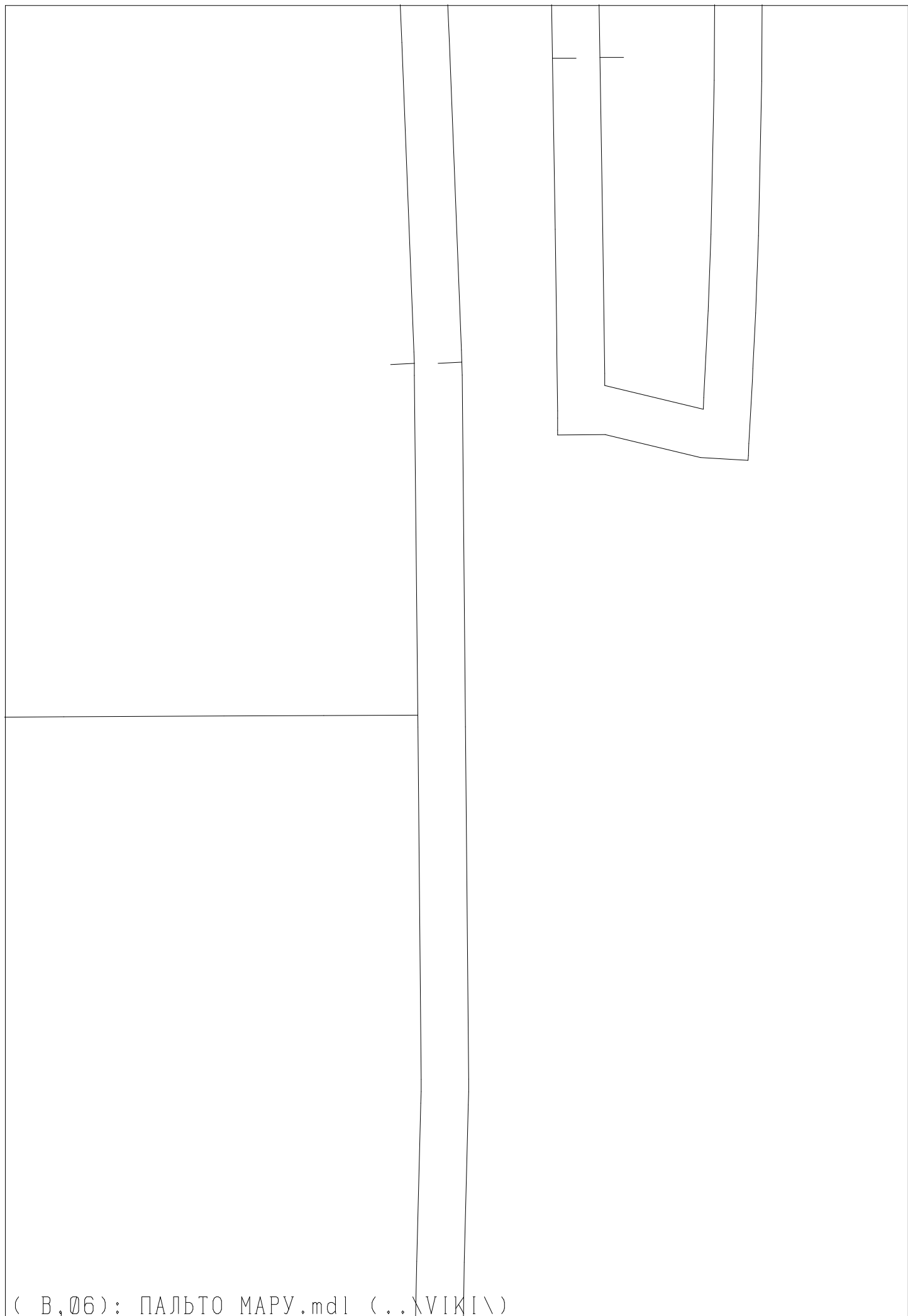




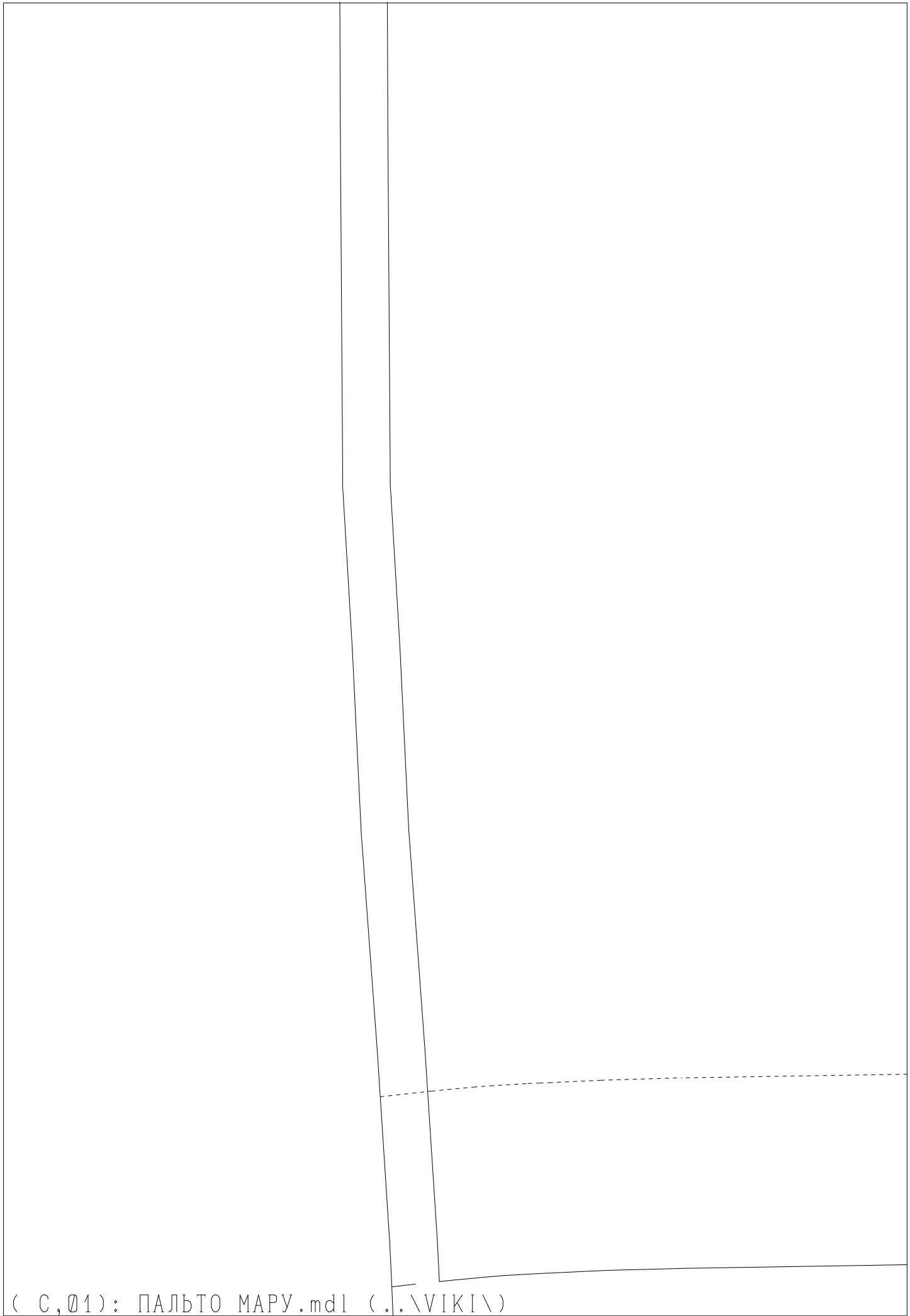


warp thread





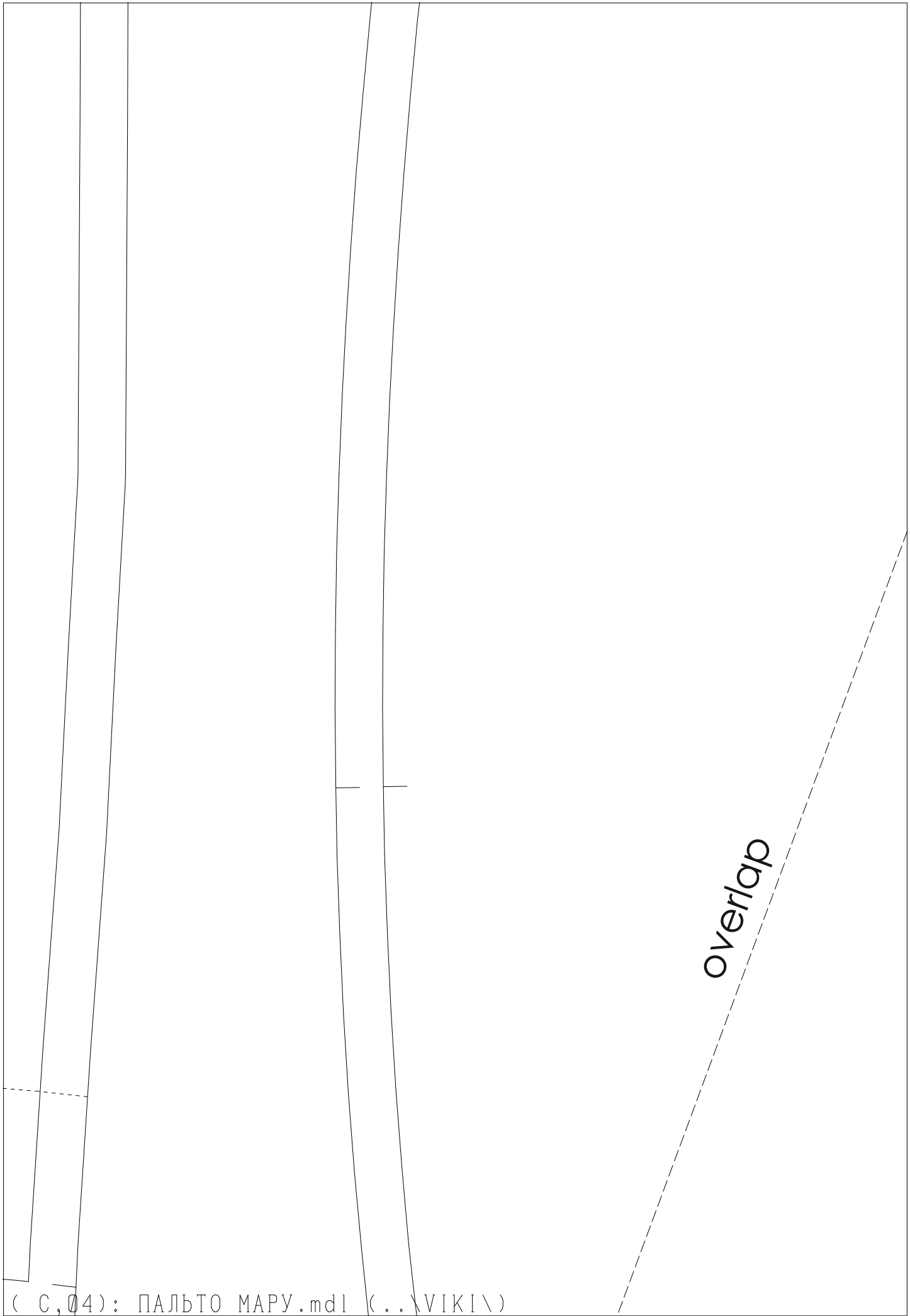
(В,06): ПАЛЬТО МАРУ.mdl (..\VIKI\)



(C,01): ПАЛЬТО МАРУ.mdl (..\VIKI\)

<p>general chest supplement 22.7 cm general waist supplement 44.9 cm general hips supplement 19.3 cm back length 71.4 cm sleeve length (plus shoulder length) 72.1 cm shoulder supplement 12.9 cm</p>	
--	--

<p>clue</p>	
-------------	--





stitch the dart

coat mary
size 36

height 2 (162 -168)

front

2 details + 2 details from interfacing

- VIKISEWS.COM
- VIKISEWS_PATTERNS
- YOUTUBE- VIKI SEWS
- VK.COM - VIKISEWS

Viki
S E W S

warp thread

coat many
size 36
height 2 (162-168)
stand
2 details +2 details from interfacing
- VIKISEWS.COM
- VIKISEWS-PATTERNS
- YOUTUBE - VIKISEWS
- VK.COM - VIKISEWS

- 
- VIKISEWS.COM
 - VIKISEWS_PAT
 - YOUTUBE - VIK
 - VK.COM - VIK

coat mary

size 36

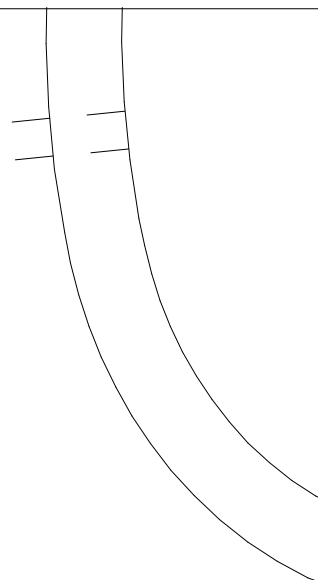
height 2 (162 -168)

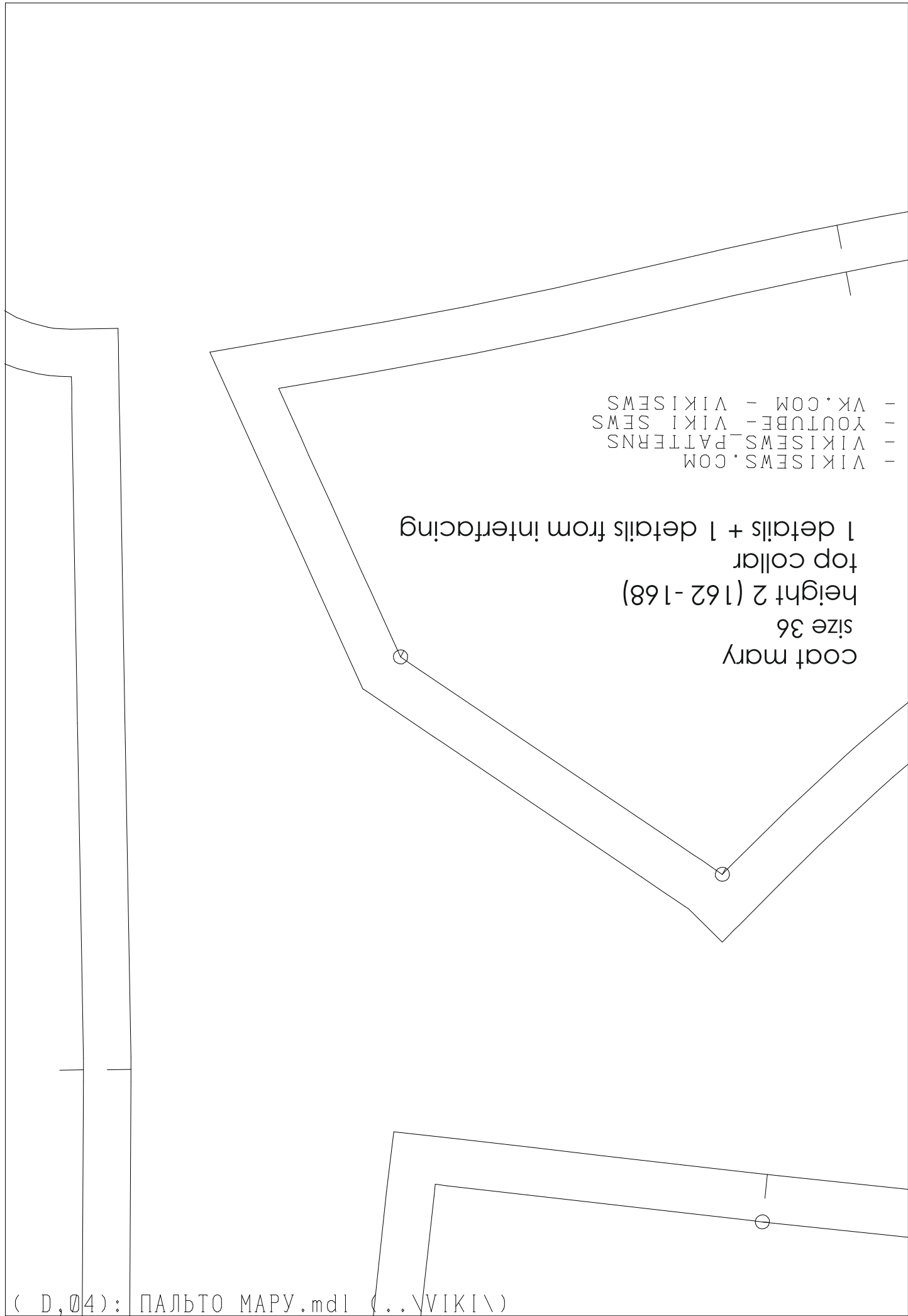
back

1 details

TERNS
I SEWS
I SEWS

warp thread

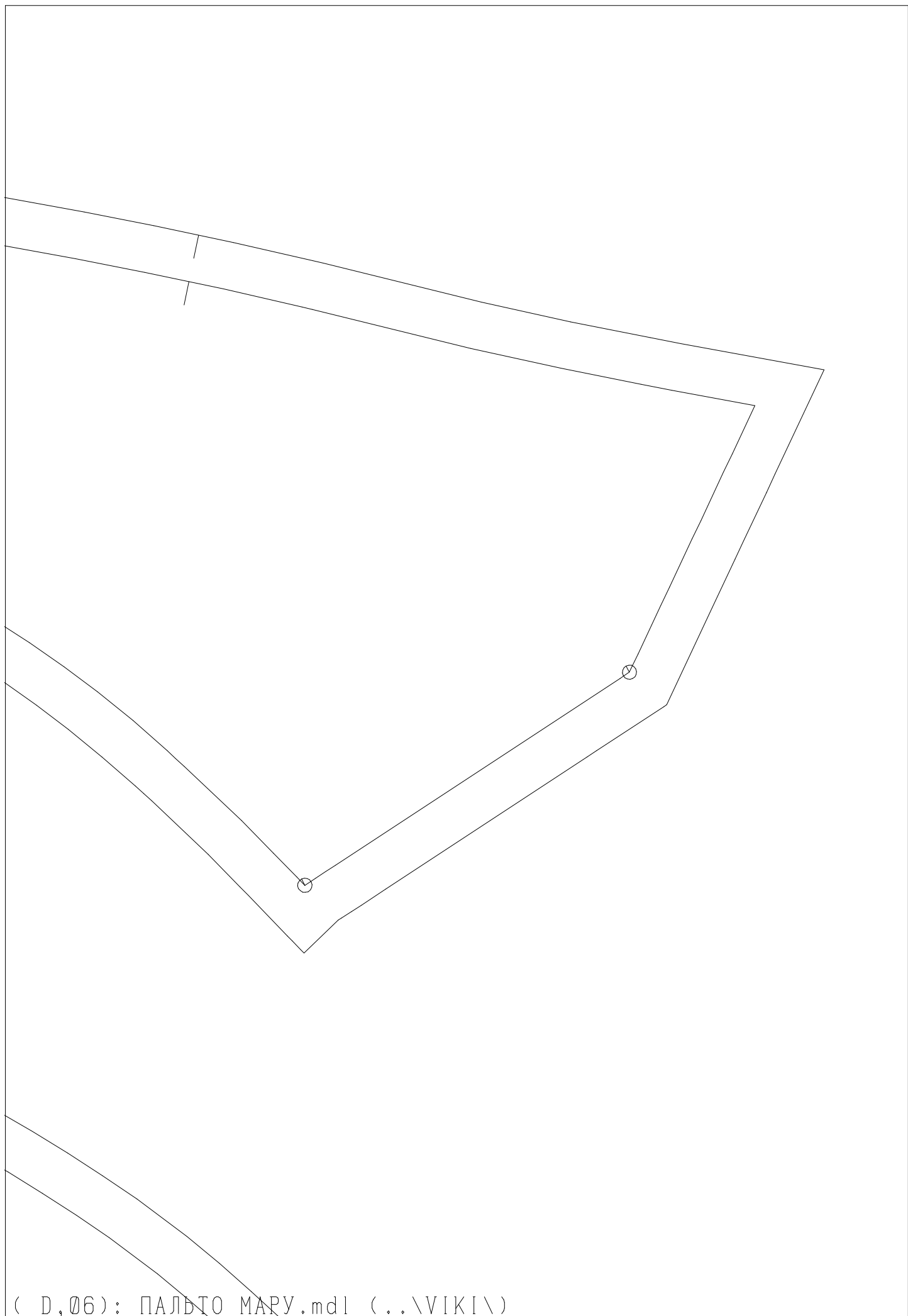




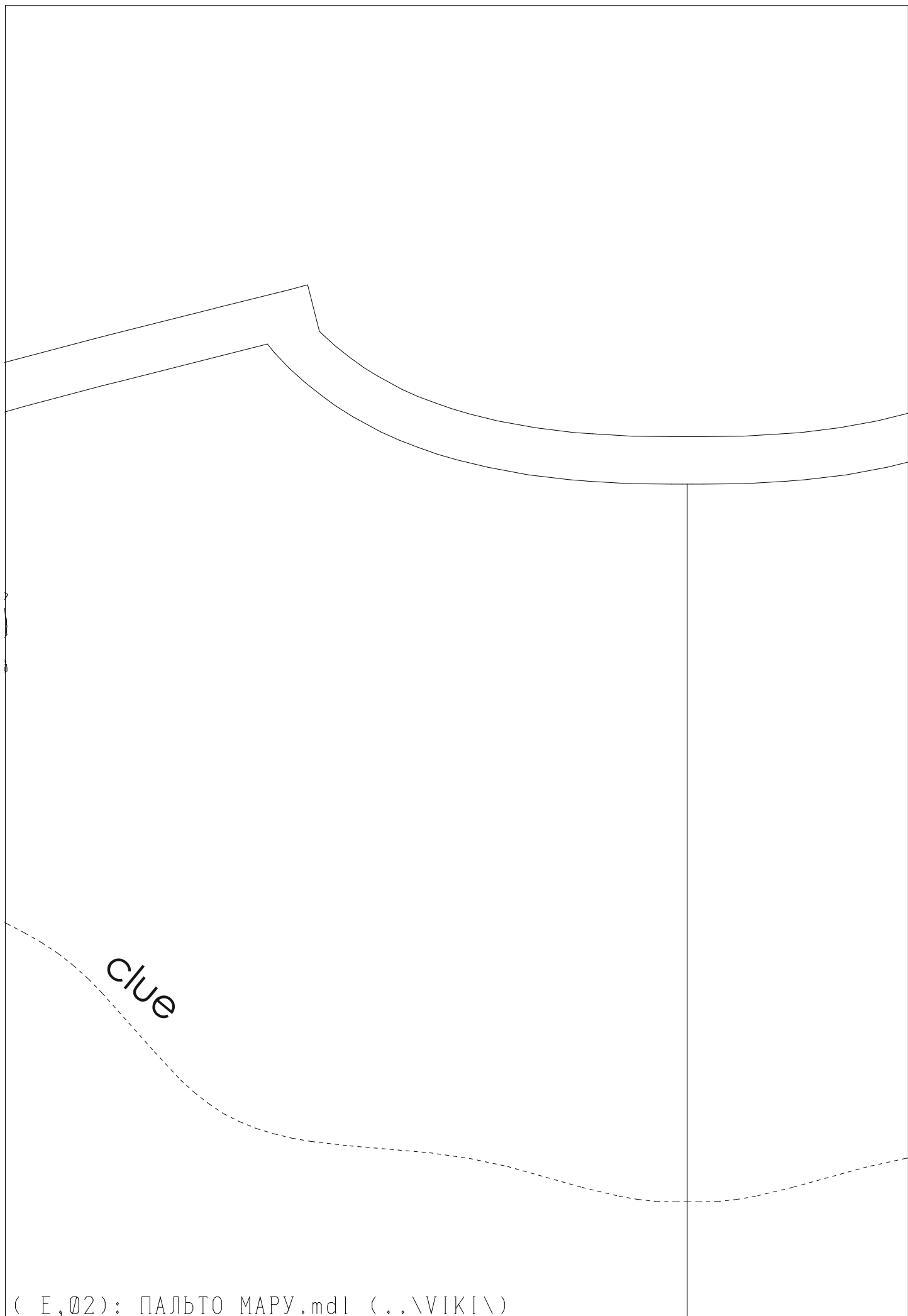
SEE S
Viki

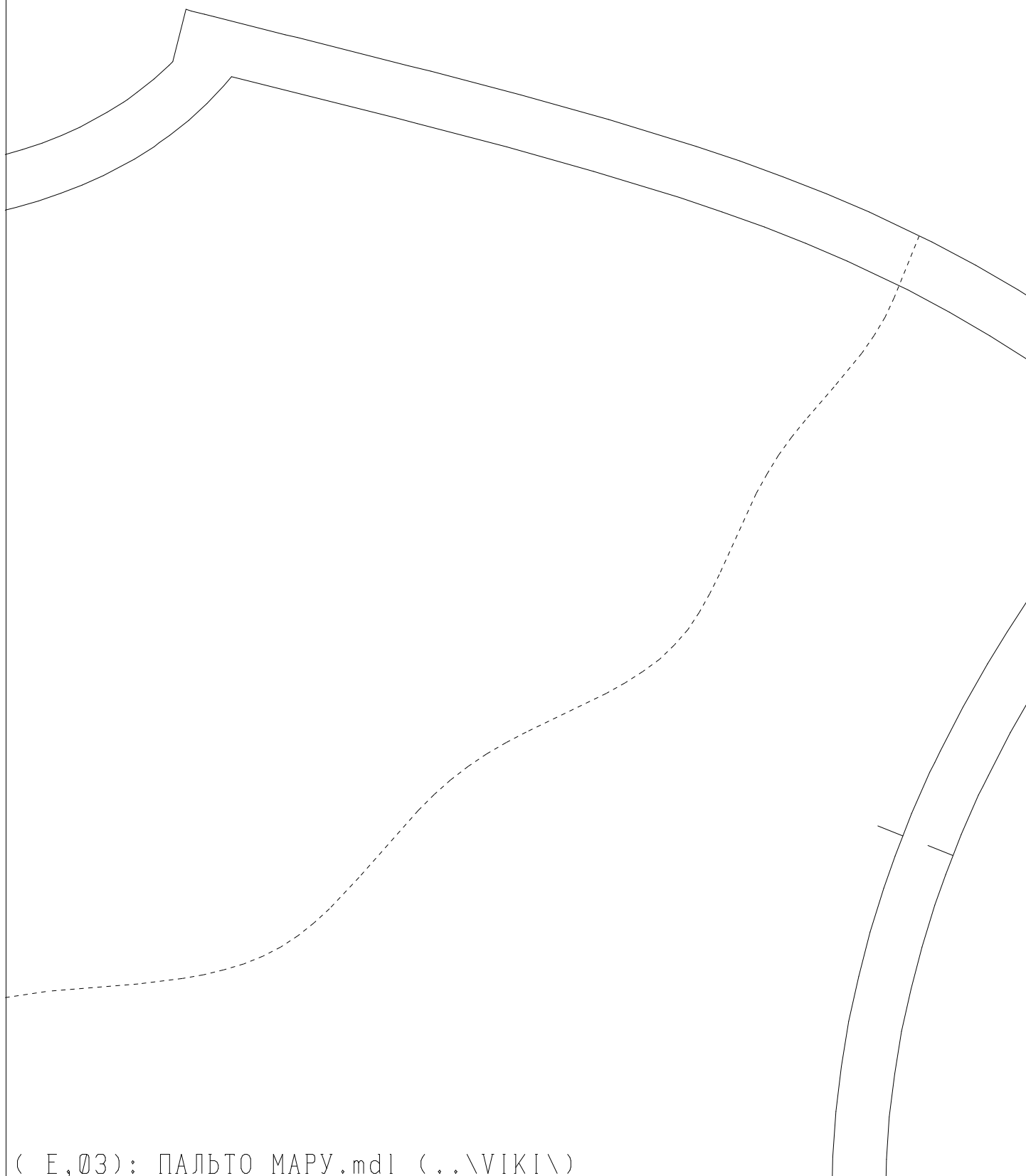
warp thread

Viki
SEE S

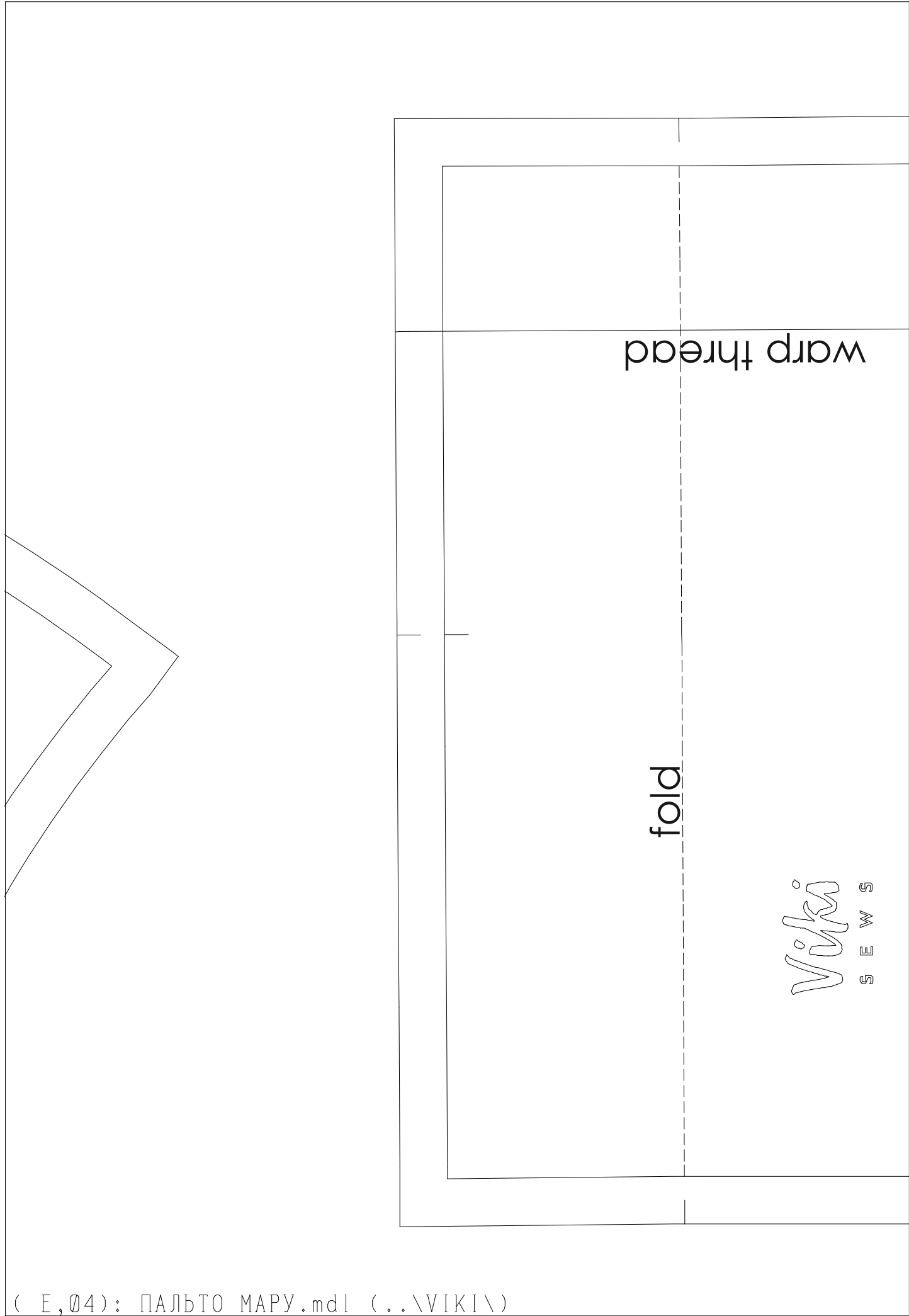


Viki
S E W S





(E,03): ПАЛЬТО МАРУ.mdl (..\VIKI\)



Viki
SEWS

fold

warp thread

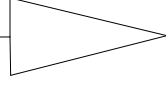
coat mary

size 36

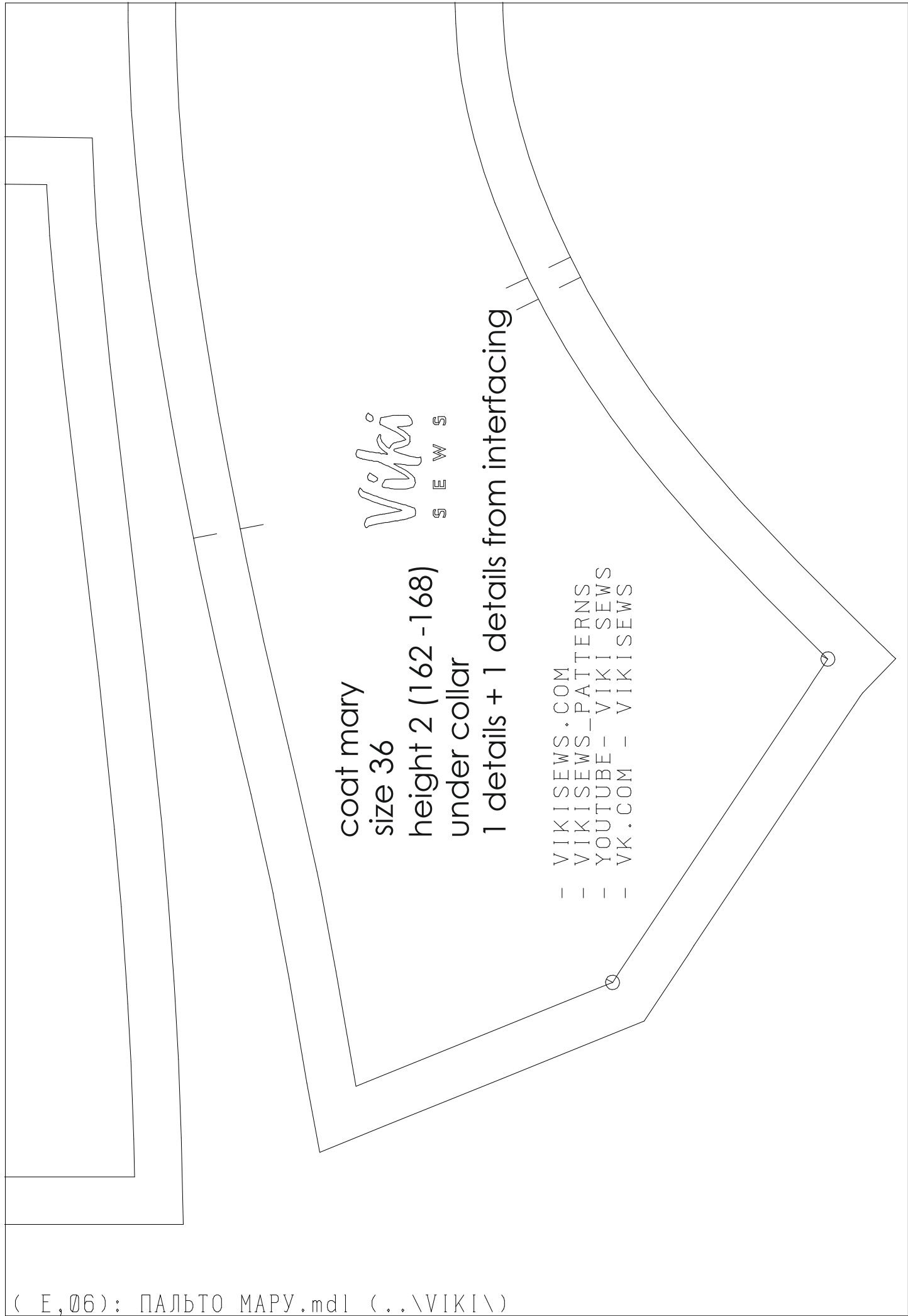
height 2 (162 -168)

pocket

2 details+ 2 details from interfacing



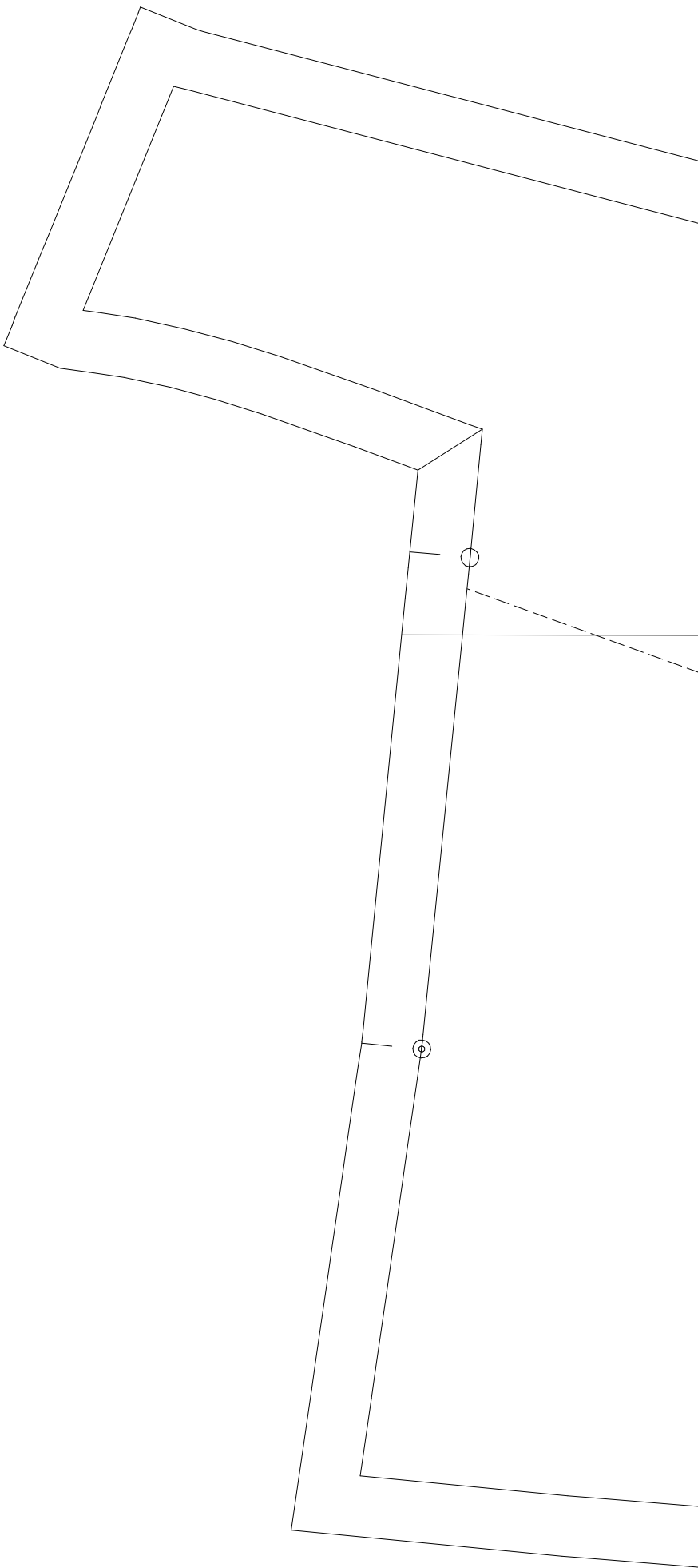
- VIKISEWS.COM
- VIKISEWS_PATTERNS
- YOUTUBE - VIKISEWS
- VK.COM - VIKISEWS



coat mary
size 36
height 2 (162 -168)
under collar
1 details + 1 details from interfacing

Viki
SEWS

- VIKISEWS.COM
- VIKISEWS_PATTERNS
- YOUTUBE - VIKI SEWS
- VK.COM - VIKISEWS



coat mary

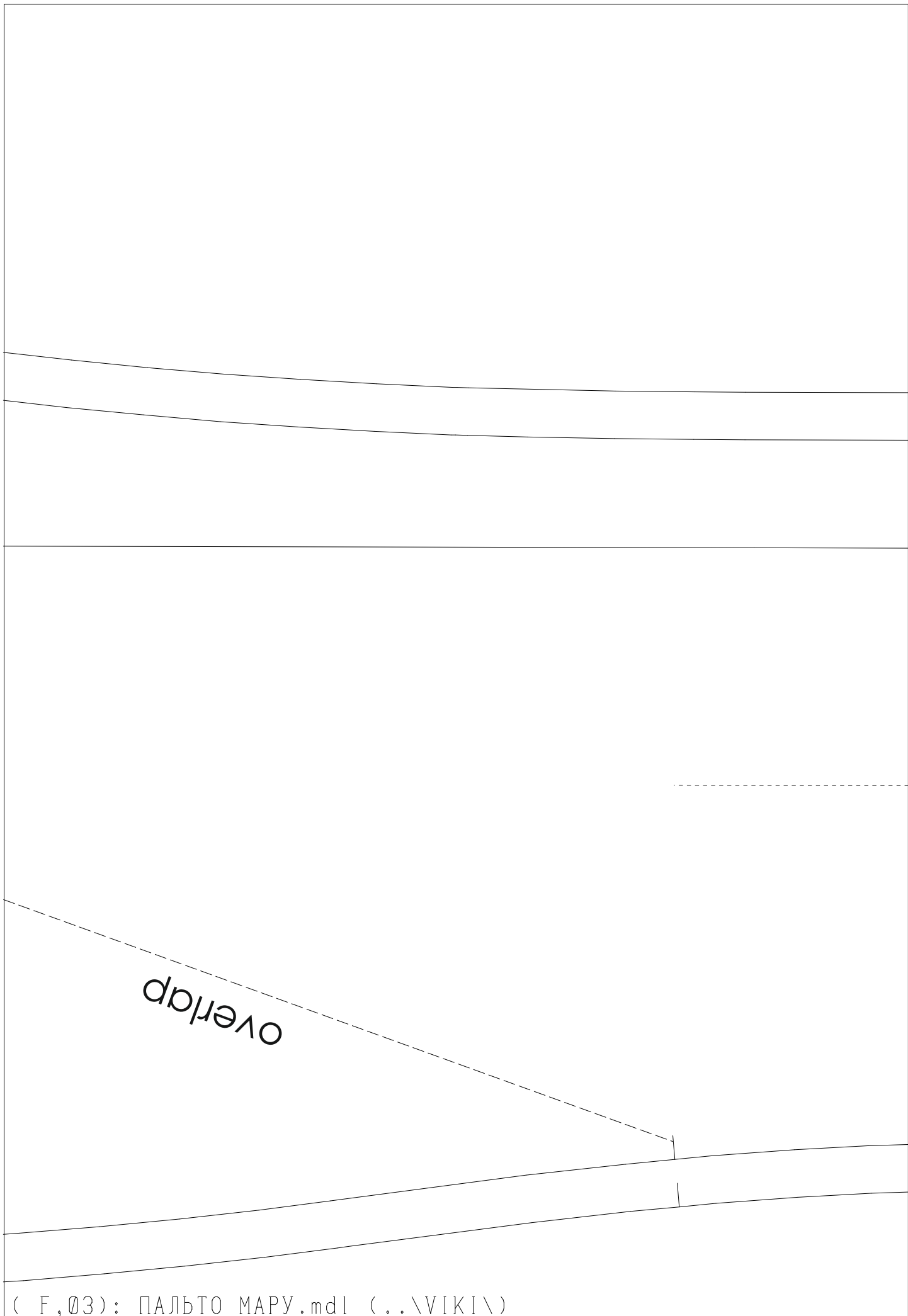
size 36

height 2 (162 -168)

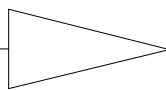
front facing

2 details + 2 details from interfacing

- VIKISEWS.COM
- VIKISEWS/PATTERNS
- YOUTUBE-VIKISEWS
- VK.COM - VIKISEWS



warp thread



front center

